

# 用于绳、缆、网等工业领域的单丝机组

鑫博轩绳、缆、网等工业领域的单丝机组专门设计用于生产绞绳、编织绳、渔网、工业防护网, 缆绳, 还有混凝土增强纤维。



## 主要特点

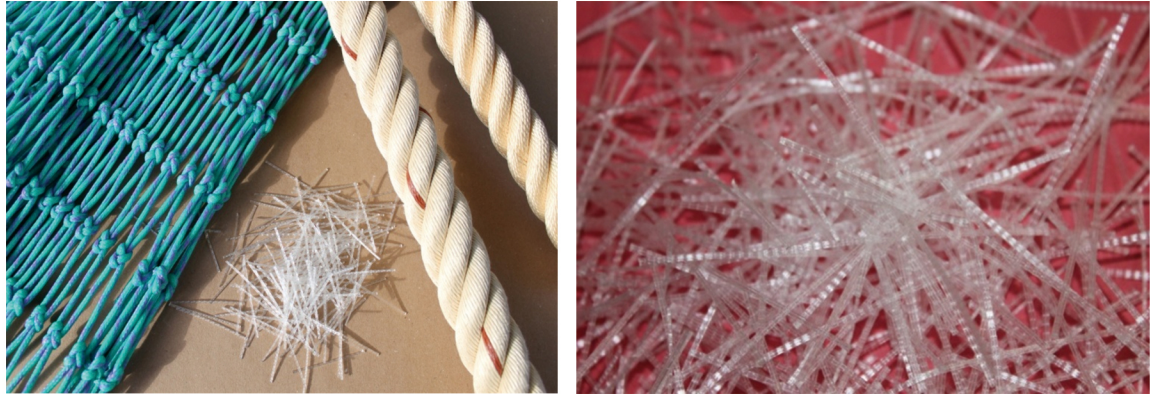
- 原料采用PP,HDPE,PA 和PET树脂
- 高强度
- 极低的延伸率控制

在渔网和绳索应用领域里, 市场非常关切HDPE纱线的两个关键指标: 断裂强度和断裂延伸率。对于断裂强度而言, 市场设定的标准为7.5克/旦(66.8cN/tex), 而采用鑫博轩技术, 则可达到11.5克/旦(102cN/tex)。断裂延伸率越高对渔网和绳索起到负面效果。采用鑫博轩拉丝机生产出来的产品断裂延伸率在14-16%, 其他设备生产的产品断裂延伸率大多在22~25%。

设备型号	线径 $\varnothing$ mm	HDPE 产量 [kg/h]	PP 产量 [kg/h]	单丝根数	HDPE 强度 [gr/den]	PP 强度 [gr/den]
XBX RM 800/75	0.15	38	42	240	7	6.5
	0.25	86	94	220	6.5	6
	0.4	130	160	180	6.5	5.5
XBX RM 1000/100	0.15	48	52	300	7	6.5
	0.25	110	120	280	6.5	6
	0.4	200	210	240	6.5	5.5
XBX RM 1400/115	0.15	65	70	420	7	6.5
	0.25	150	165	392	6.5	6
	0.4	181	290	336	6.5	5.5

## MONOFILAMENT FOR TWINE/ROPE, NETS AND INDUSTRIAL FIELDS

The XBX RM extrusion line is designed for the manufacturing of twisted ropes, fishing nets, woven nets, industrial web, fiber concrete reinforcement.



### Main features

- from PP, HDPE, PA and PET
- high tenacity
- limit elongation control

For the fishing nets and ropes applications, the market is focused mostly on HDPE grades able to reach two key properties: tenacity and elongation at break. For tenacity, the best values from standard products and lines today set about 7.5gr/Denier (66.8cN/tex), an high level of material tenacity. With special extrusion line by Boxuan, properties of product can reach 11.5 gr./Denier (102cN/tex).

The high elongation at break could be negative for fishing nets and ropes. Boxuan extrusion line can supply products with low elongation at 14–16% instead of general values 22~25%.

Product	Ø mm	HDPE [kg/h]	PP [kg/h]	Monofil n°	Tenacity HDPE [gr/den]	Tenacity PP [gr/den]
XBX RM 800/75	0.15	38	42	240	7	6.5
	0.25	86	94	220	6.5	6
	0.4	130	160	180	6.5	5.5
XBX RM 1000/100	0.15	48	52	300	7	6.5
	0.25	110	120	280	6.5	6
	0.4	200	210	240	6.5	5.5
XBX RM 1400/115	0.15	65	70	420	7	6.5
	0.25	150	165	392	6.5	6
	0.4	181	290	336	6.5	5.5